

Local Waterfront Revitalization for the Towns of Clifton & Fine



Wildlife Conservation Society, Zoë Smith

Town of Clifton & Town of Fine

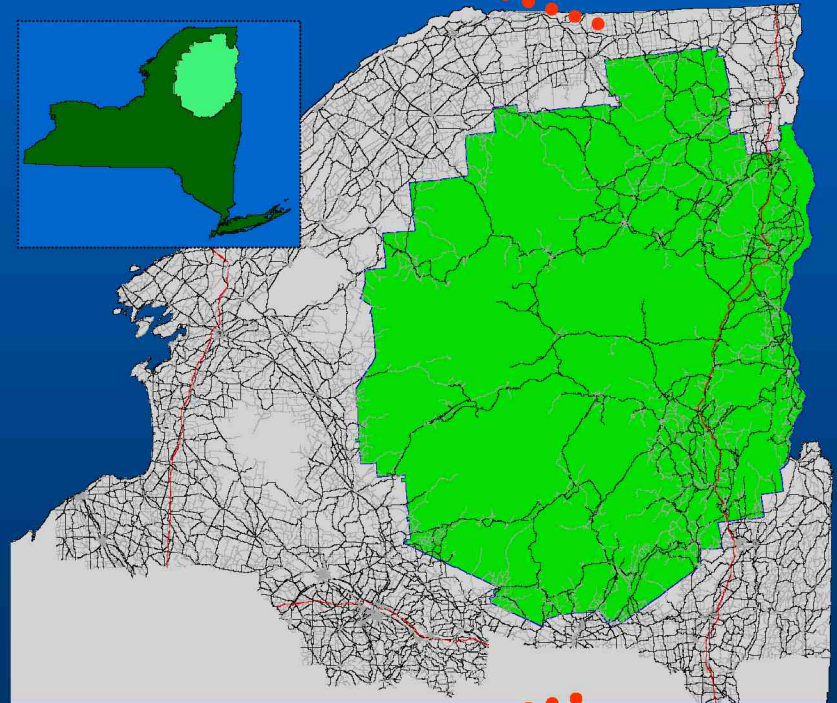
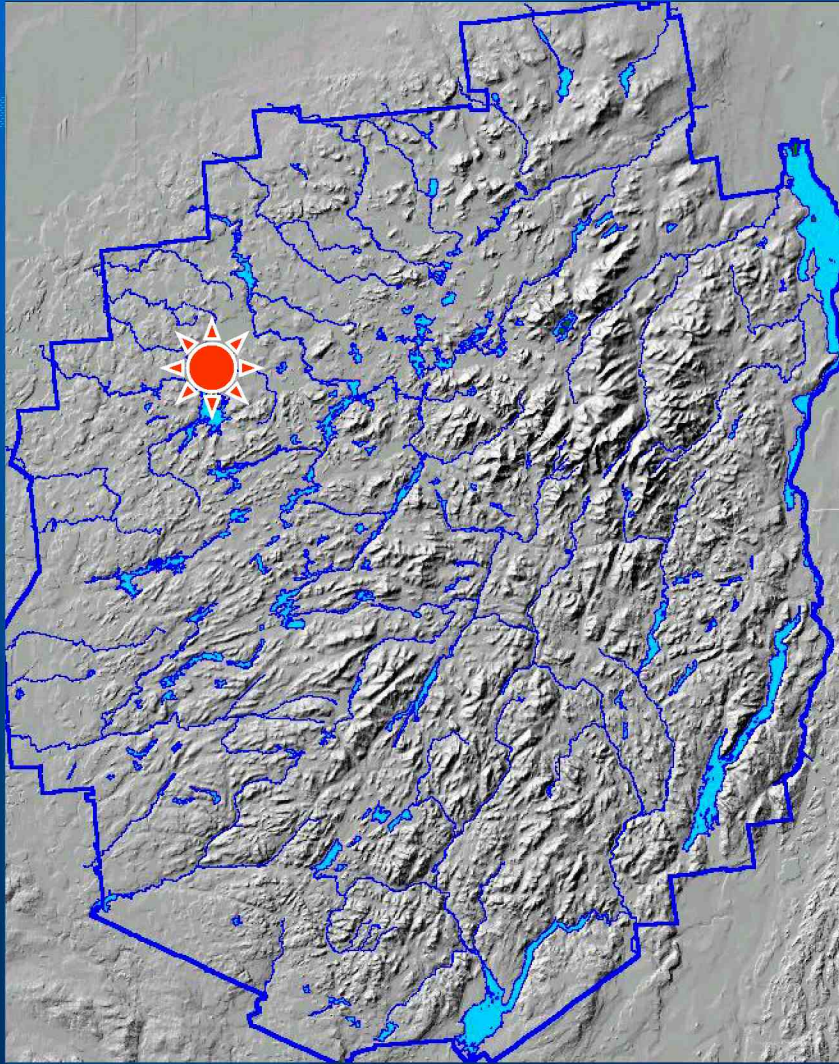
Clifton Fine Economic Development Corporation

Local Advisory Committee

NYS Department of State Division of Coastal Resources

Adirondacks

New York



Towns of Clifton-Fine

Clifton

136 square miles

791 people

5.8 people/square mile

Fine:

167 square miles

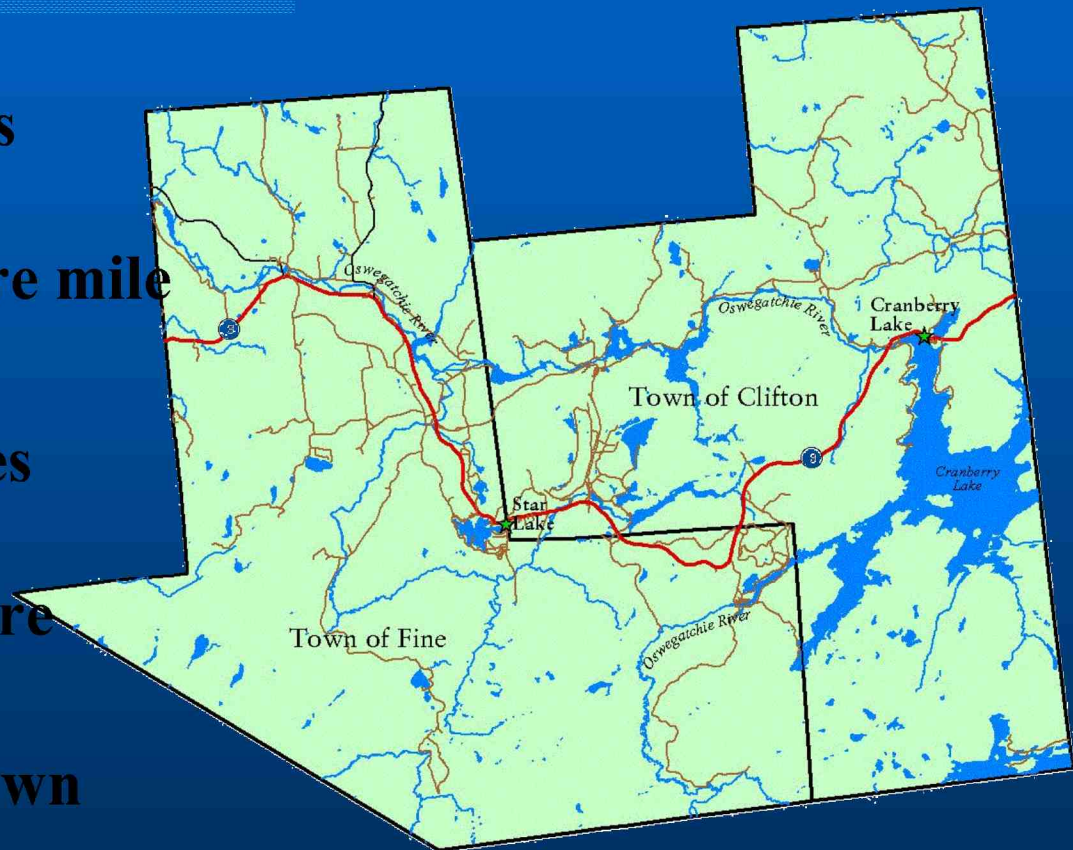
1622 people

9.7 people/square
mile

State Land in Each Town

Clifton – 32%

Fine – 52%









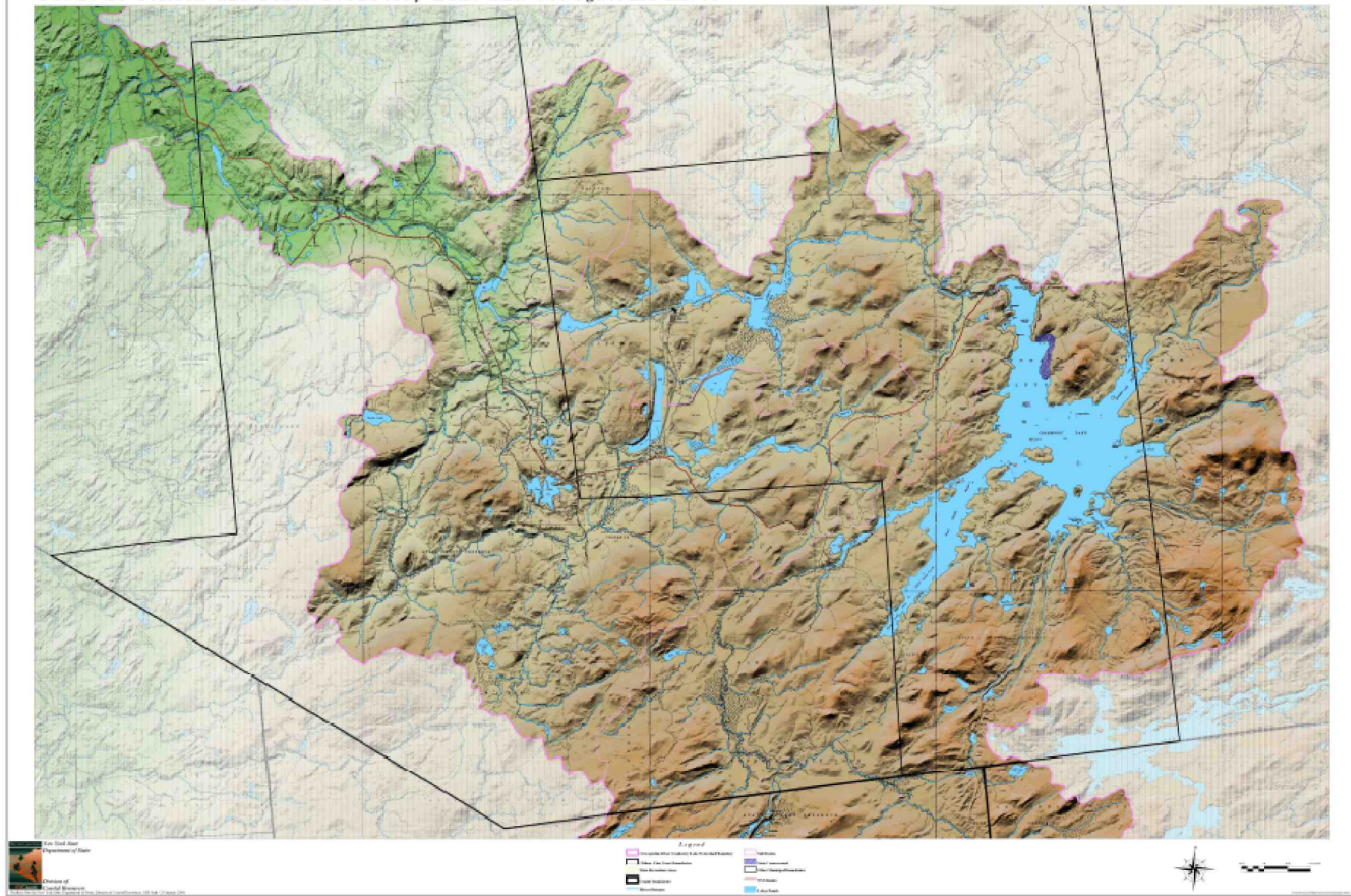




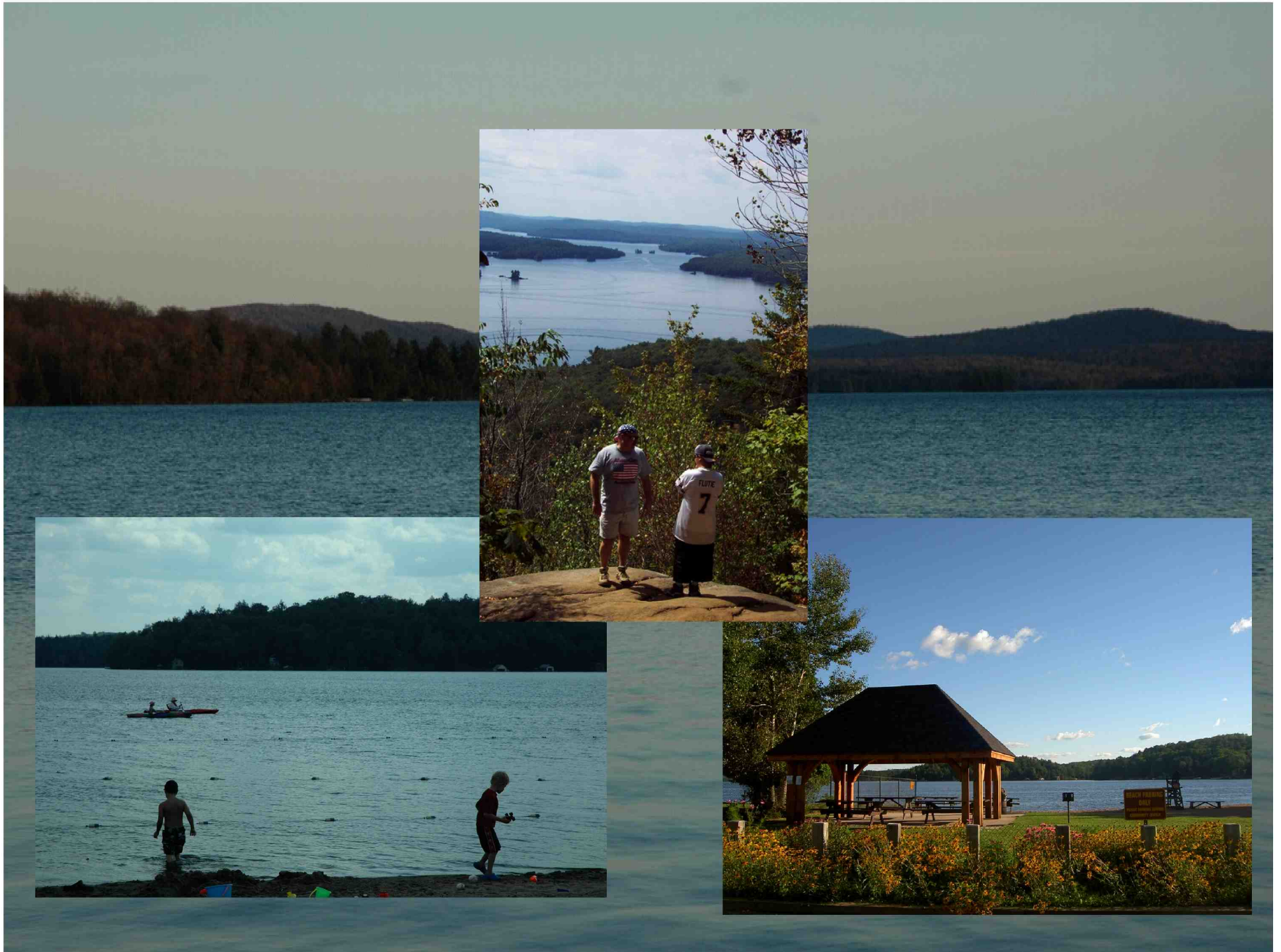




Towns of Clifton and Fine: Cranberry Lake and Oswegatchie River







Challenges

- **New employment opportunities to replace lost industrial jobs**
- **Comprehensive planning**
- **Interpretation of natural resources and marketing of access to trails and water bodies**
- **Appropriate use and stewardship of public lands**
- **Infrastructure to support transition to a tourism-based economy**

Unfortunate Events in the Community

- J&L Iron Ore Facility closed in 1978
- Blow down in July 1995
- Economic Downturn
 - – businesses closed down
- Appleton Papers shut down the Paper Mill in Newton Falls in 2000
- Decline in School Enrollment (1200 to 300)
- Financial problems at Clifton-Fine Hospital
- Star Lake Fire Hall & Hospital Clinic burned



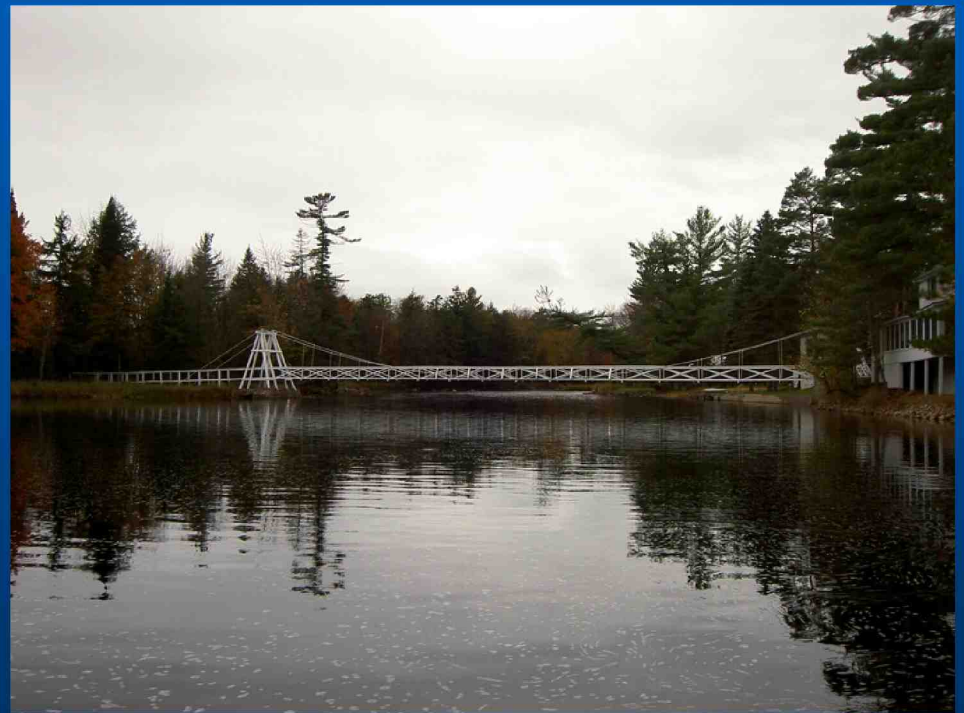
Waterfront revitalization strategy

- Locally prepared plan
- Collaborative, community directed
- Addresses waterfront and community issues
- Provides strategy to implement project ideas



Community Priorities

- **Recreational and Waterfront Access**
- **Physical Infrastructure**
- **Business, Community and Economic Development, Tourism**
- **Natural Resource Protection**



Specific Projects

- New business development
- Designated access sites
- Physical improvements to community buildings
- Route 3 beautification



Waterfront revitalization strategy

- **Developed by local input**
- **Directed by a local Advisory Committee**
- **Coordinated by local Project Team (WCS)**
- **Administered by NYS DOS**



Public Participation

- **Public workshops**
 - visioning process
 - identify important issues and opportunities
 - make recommendations and implementation plan
- **Resident surveys**
- **Local interviews**
- **Local Advisory Committee**

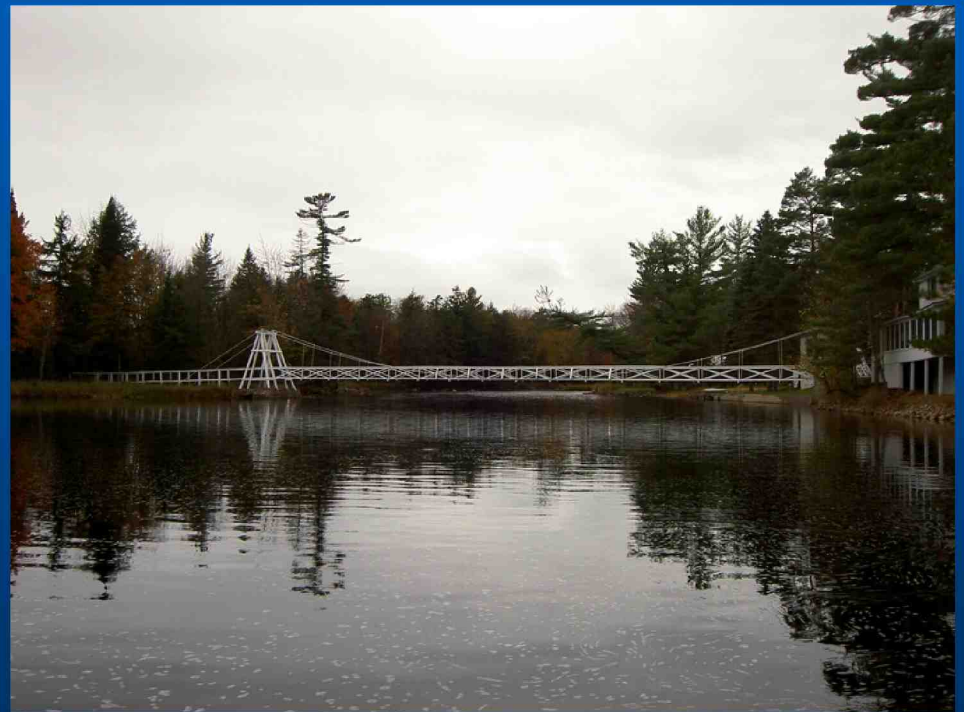


Local Advisory Committee

- Local residents representing the community
- Guide and lead the planning process
- Share relevant information
- Supervise the consultant team
- Reach out to residents and inform them about the project

Community Priorities

- **Recreational and Waterfront Access**
- **Physical Infrastructure**
- **Business, Community and Economic Development, Tourism**
- **Natural Resource Protection**



Specific Projects

- New business development
- Designated access sites
- Physical improvements to community buildings
- Route 3 beautification



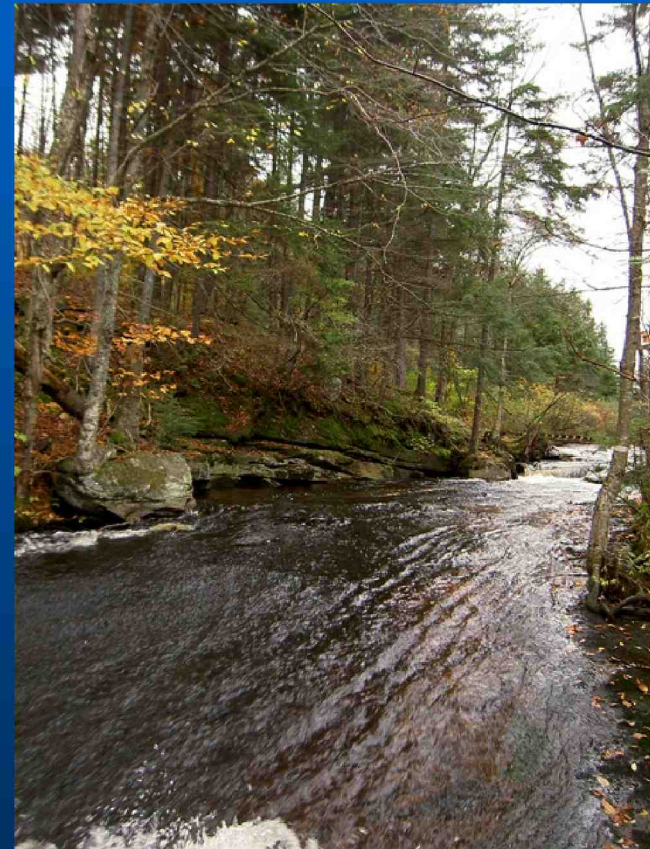
Local Benefits

- **Advances community goals**
- **Access to funding**
- **Builds consensus**
- **Develops long term partnerships to implement projects >**
- **Builds local capacity**



Community Planning Goals

- Provides context
- Outlines current conditions and opportunities
- Basis for future planning



Access to funding

- Implementation Plan
- Provides opportunities for future funding



Local consensus

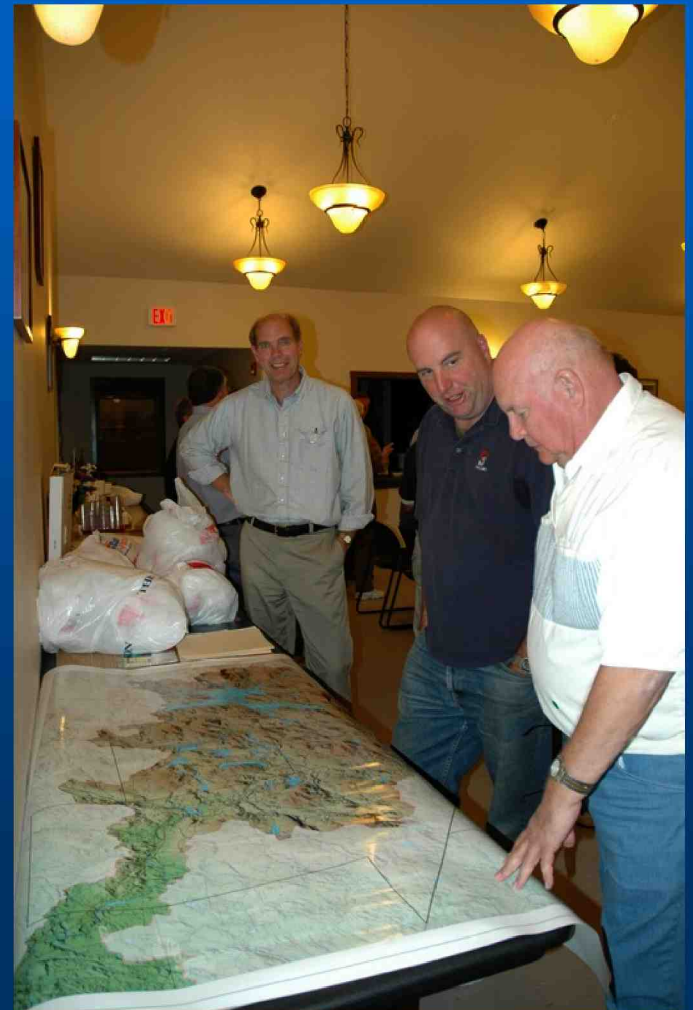
- Demonstrates commitment
- Ensures sustainability



Builds Local Capacity

Project Team

- Administer grant
- Facilitate project on behalf of Town
- Coordinate with Advisory Committee and public
- Develop and submit plan and reports



Partnerships

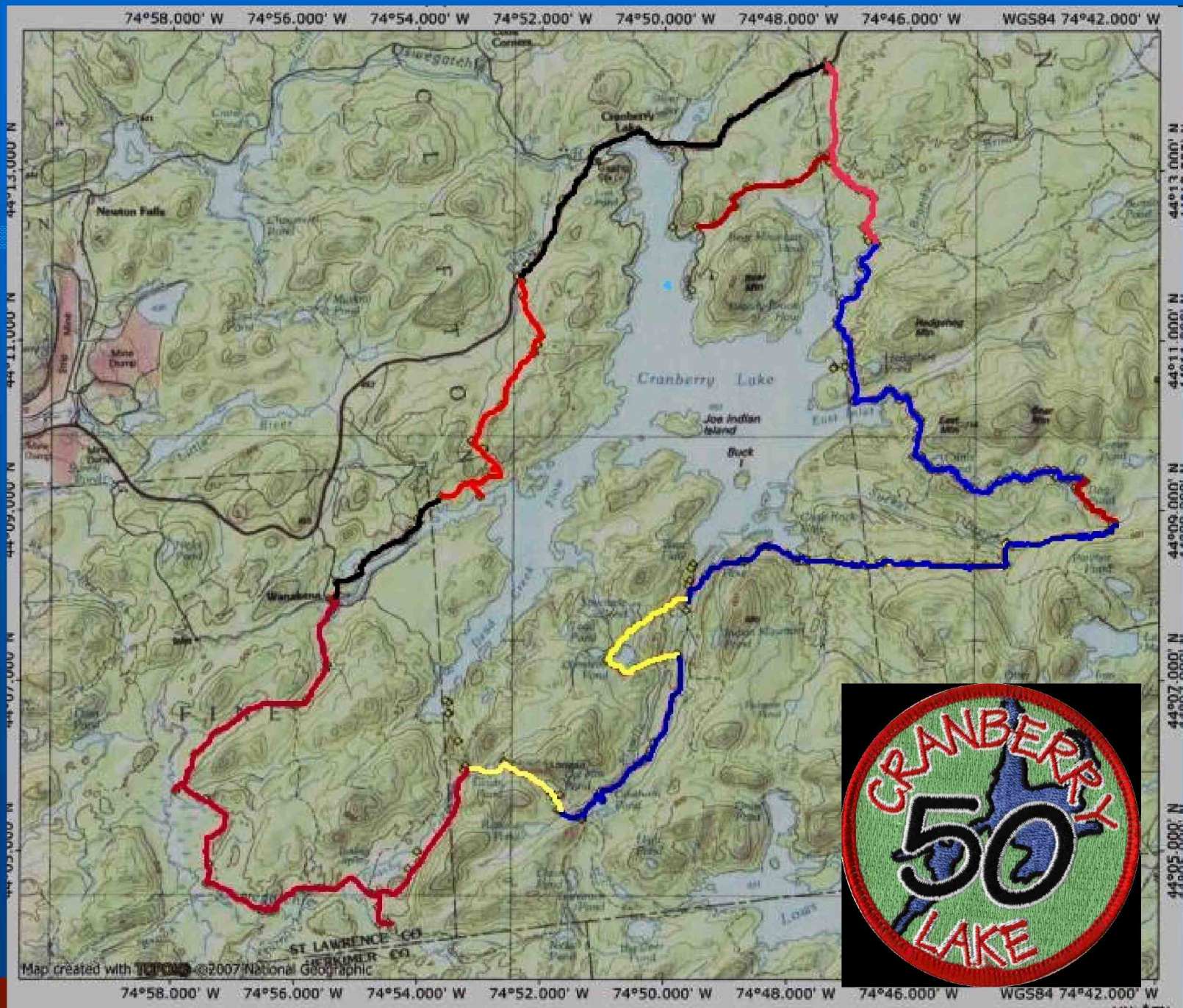
- ✓ Inter-municipal governments
- ✓ Consultant/Project Team (WCS)
- ✓ Local Advisory Committee
- ✓ New York State Department of State



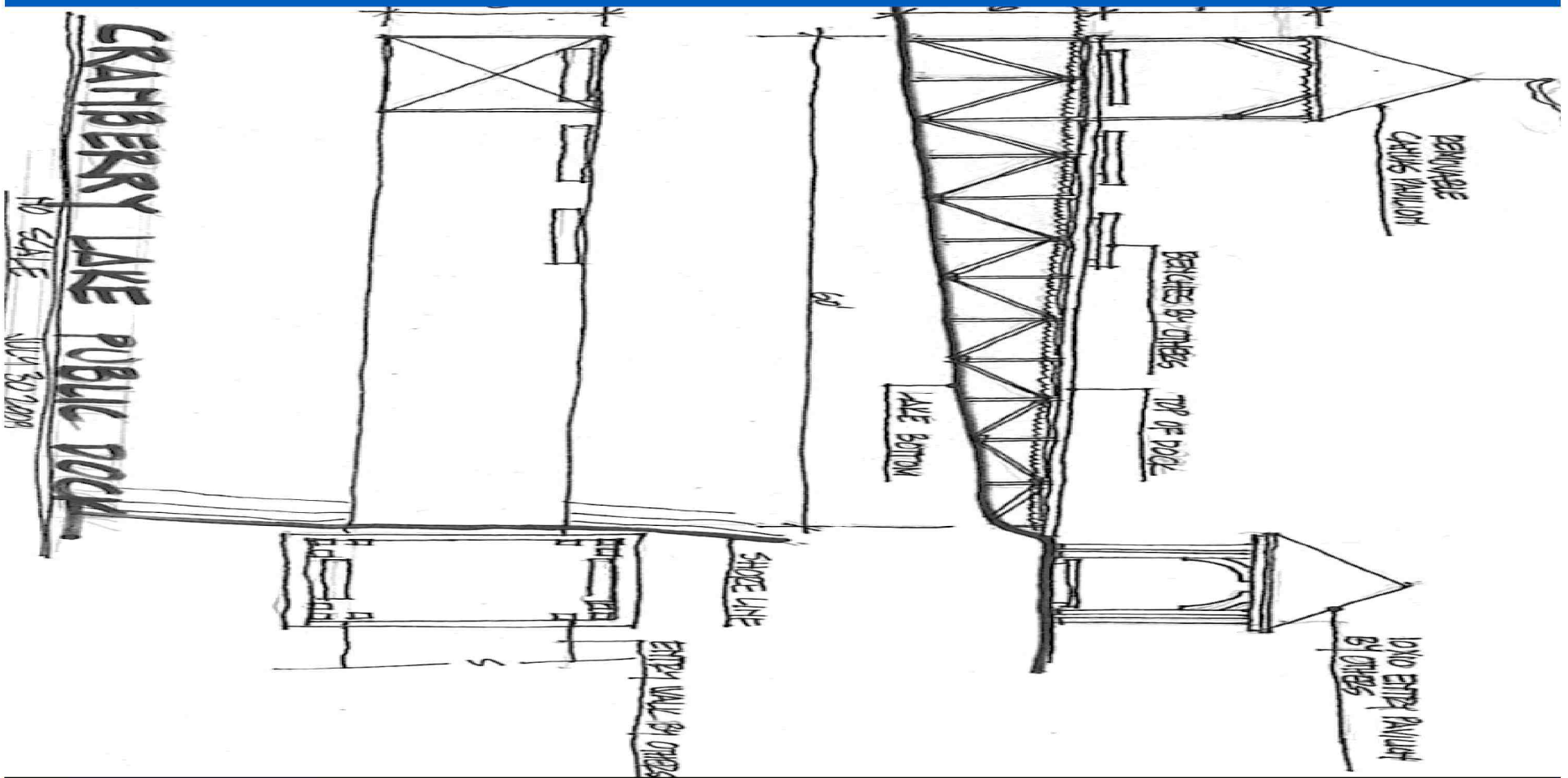
Moving Forward

- 2008 NYS DOS funding
- Future support from DOS
- Empower & sustain the Advisory Committee





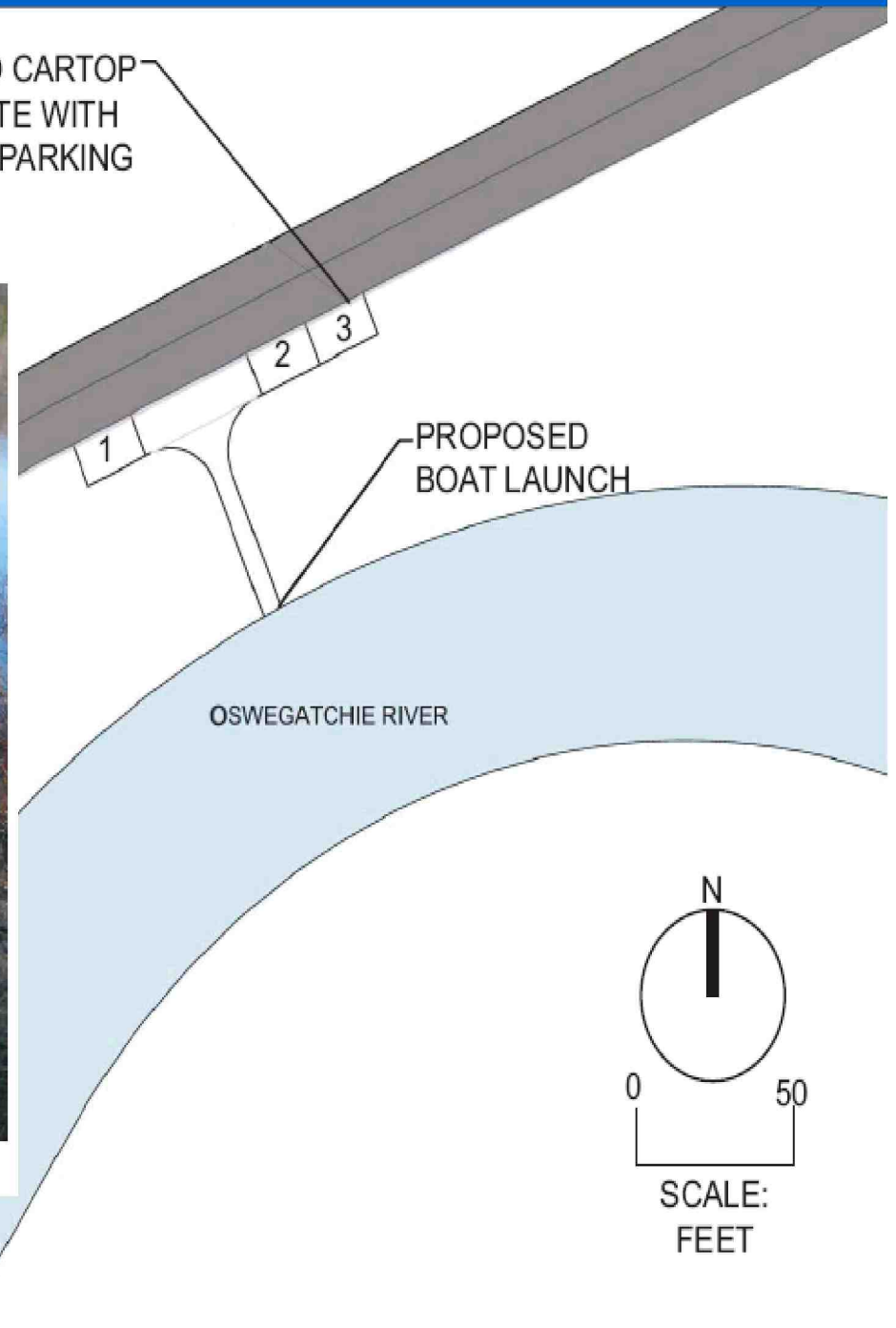




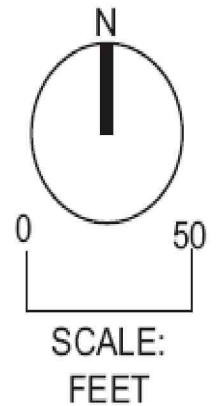
PROPOSED CARTOP
LAUNCH SITE WITH
ROADSIDE PARKING



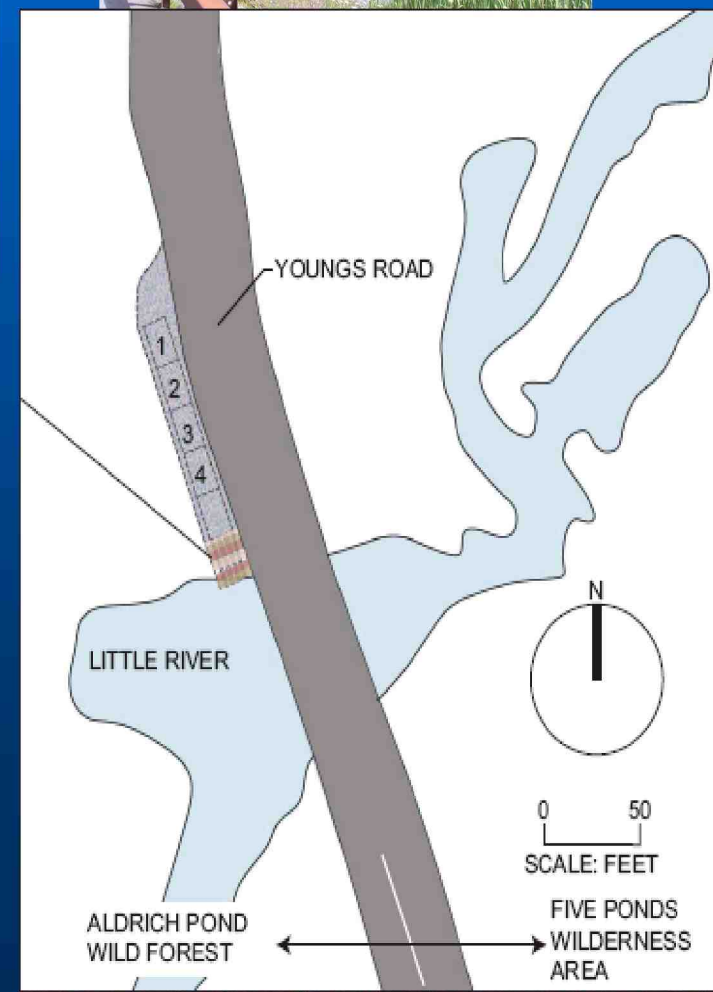
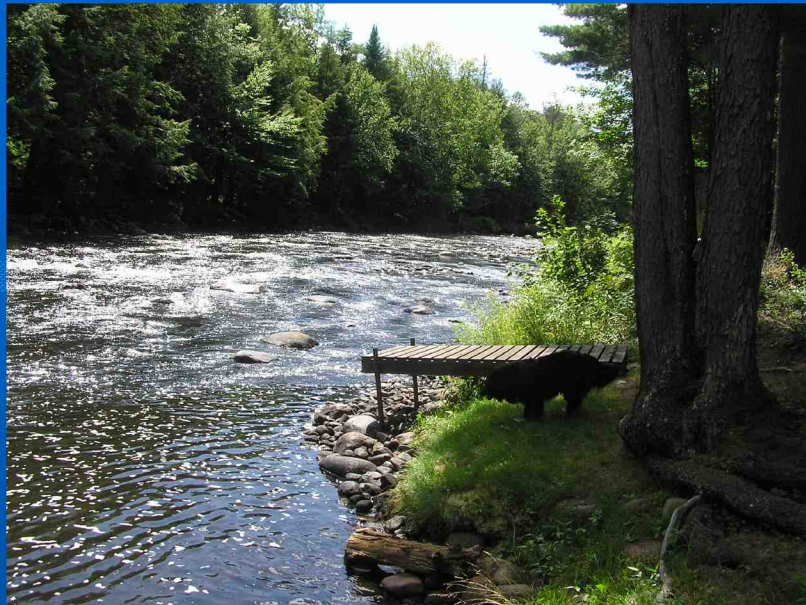
EXISTING LAUNCH SITE ON THE OSWEGATCHIE RIVER



OSWEGATCHIE RIVER



SCALE:
FEET



Local perspective

- Relieves the Town of “one more” unfunded project
- Creates new volunteers committed to community future
- Opportunity to “plan” and “talk” across social boundaries
- Creates real opportunities for change
- Shows great things can happen

Local perspective

- Access to new resources and perspectives
- Developed shared sense of what's important
- Creates real opportunities for change
- Volunteer participation does matter
- Shows great things can happen

Application Information

- NYS Designated Waterways
- Town must be applicant
- Work with consultant or local group to apply and administer grant

<http://nyswaterfronts.com/grantopps.asp>

ME: zsmith@wcs.org

Upcoming event

Community Exchange Day
Community & waterfront revitalization

Village of Rouses Point
June 2007

Contact: WCS
518-891-8872
wcs.org/adirondacks